

ImoWare USB421

USB 4-Port Roaming Mouse Switcher



User Manual

VER 1.0

Thank you for purchasing this product

For optimum performance and safety, please read these instructions carefully before connecting, operating or adjusting this product. Please keep this manual for future reference.

Surge protection device recommended

This product contains sensitive electrical components that may be damaged by electrical spikes, surges, electric shock, lightning strikes, etc. Use of surge protection systems is highly recommended in order to protect and extend the life of your equipment.

Table of Contents

1. Introduction.....	1
2. Features.....	1
3. Package Contents.....	1
4. Specifications.....	2
5. Operation Controls and Functions.....	3
5.1. Front Panel.....	3
5.2. Rear Panel.....	4
6. Web GUI User Guide.....	4
7. Application Example.....	11

1. Introduction

This USB 4-Port Roaming Mouse Switcher can realize that 4-port USB1.1 keyboard and mouse or other peripherals share four computer hosts. It supports Mouse Slide Screen Function with three modes (Mode 1, Mode 2 and User Defined Mode). Built-in Web GUI can set Synchronous Control Function (One set of keyboard and mouse can control all connected computers simultaneously). Four computer monitors support two fixed placement modes (Web GUI users can custom the placement mode).

2. Features

- ☆ USB 1.1 compliant
- ☆ 4 x USB1.1 keyboard and mouse port, 4 x USB 1.1 PC port (HOST end)
- ☆ Support Mouse Slide Screen Function. In different modes, one set of keyboard and mouse can move left and right or up and down on four computer monitors, and the user can select one host to operate.
- ☆ Built-in Web GUI can set Synchronous Control Function (One set of mouse and keyboard can control all connected computers simultaneously).
- ☆ Support three mode switch methods: mode switch button, keyboard hotkeys and Web GUI (User can define the placement mode in the User Defined Mode).
- ☆ Support USB power supply
- ☆ Simple to install, plug and play

3. Package Contents

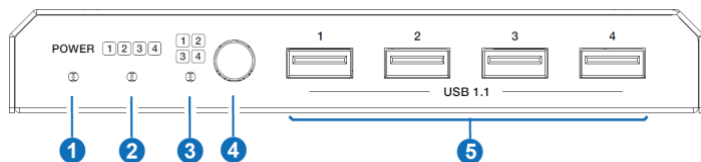
- ① 1 x USB 4-Port Roaming Mouse Switcher
- ② 1 x 5V/1A Power Supply (US standard)
- ③ 4 x USB Cable (1.5 meters)
- ④ 1 x User Manual

4. Specifications

Technical	
USB Version	USB 1.1
Data Transfer Rate	Up to 12Mbps (1.5MB/S)
ESD Protection	Human-body Model: $\pm 8\text{kV}$ (Air-gap discharge), $\pm 4\text{kV}$ (Contact discharge)
Connection	
Input	4 x USB [Type A]
Output	4 x USB [Type B]
Control	1 x RS-232 [Phoenix connector] 1 x LAN [RJ45]
Mechanical	
Housing	Metal Enclosure
Color	Black
Dimensions	142mm(W) x 82mm(D) x 21mm(H)
Weight	315g
Power Supply	DC 5V/1A Support USB power supply
Power Consumption	1.45W (Max)
Operating Temperature	0°C ~ 40°C / 32°F ~ 104°F
Storage Temperature	-20°C ~ 60°C / -4°F ~ 140°F
Relative Humidity	20~90% RH (non-condensing)

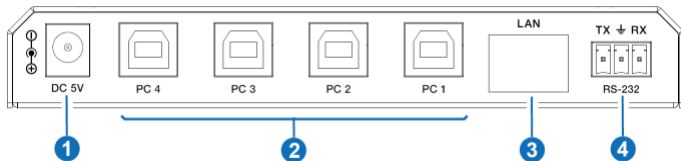
5. Operation Controls and Functions

5.1 Front Panel



No.	Name	Function Description
1	POWER LED	When the product is powered on, red power LED will be on.
2	Mode 1 LED	When Mode 1 (Mouse left and right cross screen) is selected, the green LED will be on.
3	Mode 2 LED	When Mode 2 (Mouse up, down, left, and right cross screen) is selected, the green LED will be on.
4	Mode switch button	Short press this button to select mouse slide screen mode 1/2, then the corresponding Mode 1/2 LED will be on. Press and hold this button for 3 seconds, the switcher will be reset. (Mode 1 & 2 LEDs flash simultaneously during reset.)
5	USB1.1 ports	<p>Connect to mouse and keyboard for Mouse Slide Screen Function.</p> <p>Mode 1 (Mouse left and right cross screen):</p> <ol style="list-style-type: none"> Slide the mouse beyond the left interface of the screen to select the previous input port. Slide the mouse beyond the right interface of the screen to select the next input port. <p>Mode 2 (Mouse up, down, left, and right cross screen):</p> <ol style="list-style-type: none"> Slide the mouse beyond the upper and left interface of the screen to select the previous input port. Slide the mouse beyond the bottom and right interface of the screen to select the next input port. <p>Note:</p> <ol style="list-style-type: none"> The Mouse Slide Screen Function is turned on by default. If there are less than 4 computers, the unconnected devices can be skipped directly. <p>Three mode switch methods:</p> <ol style="list-style-type: none"> Short press the mode switch button on the front panel. Use keyboard hotkeys: Press button "Scroll Lock" or "Ctrl" twice in succession, and then press number button 1/2. Through Web control: Please refer to "6. Web GUI User Guide" for details.

5.2 Rear Panel



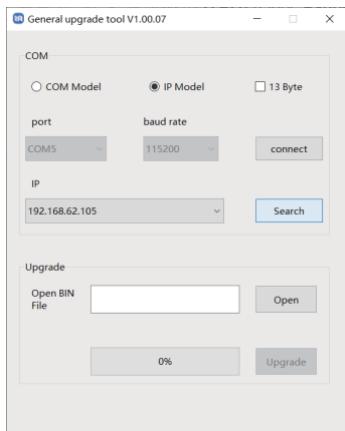
No.	Name	Function Description
1	DC 5V	DC 5V/1A power input port.
2	PC 1-4 ports	Four USB signal input ports, connecting to four computer hosts with USB cables.
3	LAN	Network port, connecting to the main control computer with network cable.
4	RS-232	RS-232 serial port, connecting to a PC or control system with a 3-pin phoenix connector cable to transmit RS-232 command.

6. Web GUI User Guide

The switcher can be controlled by Web GUI. The operation method is shown as below:

Step 1: Get the IP Address of the switcher.

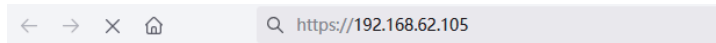
You can get the IP address via Host computer. Connect the LAN port of the switcher to a Host computer with an UTP cable, and set the IP address of the Host computer to be in the same network segment with the switcher. Then open an upgrade software (e.g. GENERAL_UPGRADE_NU) on the Host computer, select "IP Mode", and click "Search" button to check the IP address, as shown in the figure below:



IP:192.168.62.105 in the above figure is the IP Address of the switcher (the IP address is variable, depending on what the specific machine returns).

Step 2: Connect the LAN port of the switcher to a PC with an UTP cable, and set the IP address of the PC to be in the same network segment with the switcher.

Step 3: Input the IP address of switcher into your browser on the PC to enter Web GUI page.



After entering the Web GUI page, there will be a Login page, as shown below:

Note: The language depends on the browser language for the first time you enter the Web GUI. If the browser language is English, it will display English; if it is Chinese, it will display Chinese.



Select the Username from the list and enter the password. The default passwords are:

Username	User	Admin
Password	user	admin

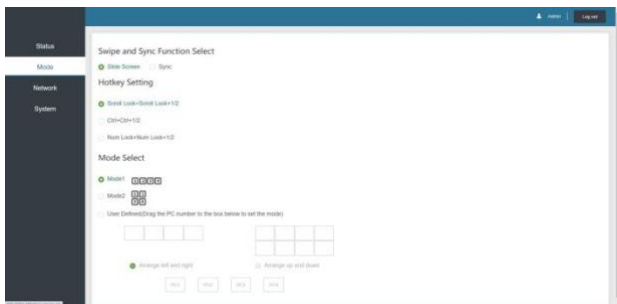
After entering the password, click the “LOGIN” button and the following Status page will appear.

■ Status Page

The Status page provides basic information about the product model, firmware version, hostname and the network settings of the device.

Status	
Model	HDP-U1440R
Firmware Version	V1.00.03/V1.07
Hostname	IP-module E008
IP Address	192.168.1.100
Subnet Mask	255.255.255.0
Gateway	192.168.1.1
MAC Address	6C DF FB 0E E0 B8

■ Mode Page



- ① **Swipe and Sync Function Select:** Click either one to switch between the Mouse Slide Screen Function (default) or Synchronous Control Function (One set of keyboard and mouse can control all connected computers simultaneously).
- ② **Hotkey Setting:** Click on any item to select the keyboard hotkeys.
- ③ **Mode Select:** Click on any item to select the mouse slide screen mode. Mode1 and Mode2 are the default system settings. Click either option to switch to the corresponding mode. Through the User Defined Mode, the user can drag the PC number to set the mode. If the PC number already exists, you can drag the PC location to change the mode.

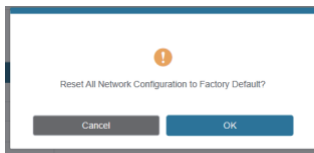
Notes:

- (1) When Mode1 / Mode2 is selected, the corresponding indicator on the front panel of the switcher is on; In the User Defined Mode, the Mode 1 and Mode 2 indicators are on at the same time.
- (2) Mode selection has the power-off memory function.

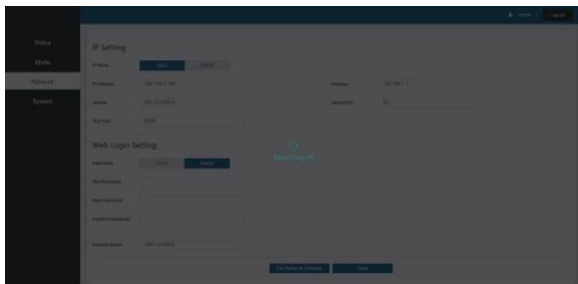
■ Network Page

Set the Default Network

Click “Set Network Defaults” button, there will be a prompt, as shown in the following figure:



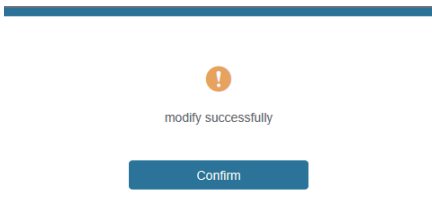
Click “OK” to search the IP Address again, as shown in the following figure:



After searching is completed, it will switch to the login page, the default network setting is completed.

Modify User Password

Click the “User” button, enter the correct Old Password, New Password, and Confirm Password, then click “Save”. After successful modification, there will be a prompt, as shown in the following figure:



Note: Input rules for changing passwords:

- (1) The password can't be empty.
- (2) New Password can't be the same as Old Password.
- (3) New Password and Confirm Password must be the same.

Modify Network Setting

Modify the Mode/IP Address/Gateway/Subnet Mask/Telnet Port as required, click “Save” to save the settings, then it will come into effect.

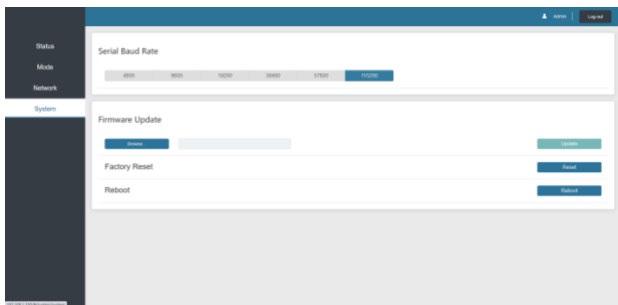
After modification, if the Mode is “Static”, it will switch to the corresponding IP Address; if the Mode is “DHCP”, it will automatically search and switch to the IP Address assigned by the router.

IP Setting	
IP Mode	<input checked="" type="radio"/> Static <input type="radio"/> DHCP
IP Address	<input type="text" value="192.168.1.100"/>
Subnet	<input type="text" value="255.255.255.0"/>
TCP Port	<input type="text" value="8000"/>
Gateway	<input type="text" value="192.168.1.1"/>
Telnet Port	<input type="text" value="23"/>

The value ranges of each parameter are as follows

Parameter	Range Value
IP Address	1.0.0.1~223.255.255.254
Gateway	The first three digits of the Gateway must be the same as the first three digits of the IP address. The last digit ranges from 1 to 254.
Subnet Mask	Subnet Mask is not allowed to set 0.0.0.0/255.255.255.255.
Telnet Port	1~65535
TCP Port	1~65535

■ System Page



- ① **Serial Baud Rate:** Click the value to set the Serial Baud Rate.
- ② **Firmware Update:** Click “Browse” to select the update file, then click “Update” to complete firmware update.
- ③ **Factory Reset:** You can reset the machine to factory defaults by clicking “Reset”.
- ④ **Reboot:** You can reboot the machine by clicking “Reboot”.

Note: After reset/reboot, it will switch to the login page.

7. Application Example

