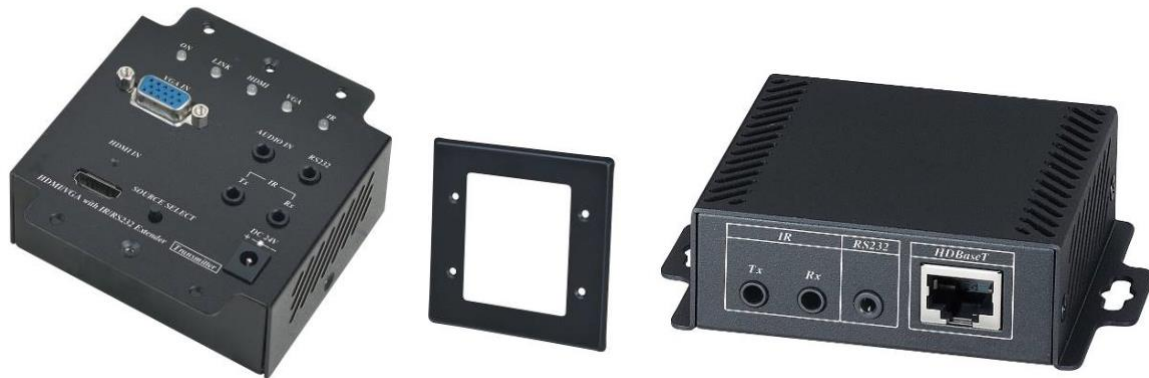




## HDB100-4K VGA/HDMI (HDBase-T) Extender



IMOWARE HDB100-4K support HDMI up to 4K@60Hz YUV4:2:0 and VGA up to 1920 x 1200@60Hz, with HD video/audio, bidirectional IR and RS-232, 2 way power over CAT5e/6 cable. It is an ideal solution for extending PC/laptop to a display output to a projector/monitor application. With a metal face plate at transmitter unit to provide installer a flexible installation to fit the TX unit at wall or on a meeting table, which is a perfect application at video conference room.

### VGA/HDMI Auto Switch to HDBaseT Extender With IR/RS232/PoH

- To send and extend VGA/HDMI signal with IR/RS232/Power signal over one CAT5e cable.
- Auto switch or manually setting for VGA and HDMI inputs.
- VGA support stereo audio convert to HDMI output, resolution up to 1920x1200@60Hz.
- Transmission range up to 70M by CAT5e/6 cable.
- Uncompression video transmission, HDMI resolution up to 4K@60Hz 4:2:0 , 4K@30Hz and 3D.
- Support Bi-directional IR with 30-60 KHz, RS232, PoH, and CEC.
- Max. Data Rate- 10.2Gbps.
- HDMI 1.4 and HDCP compliance.
- Audio support up to LPCM7.1@192Khz, Dolby TrueHD, DTS-HD MA.
- Support PoH (Power over HDBaseT), allow power send either from TX or RX unit.
- Built in power isolation.
- Transmitter unit include metal wall plate mounting brackets for easy installation at wall or on meeting table.

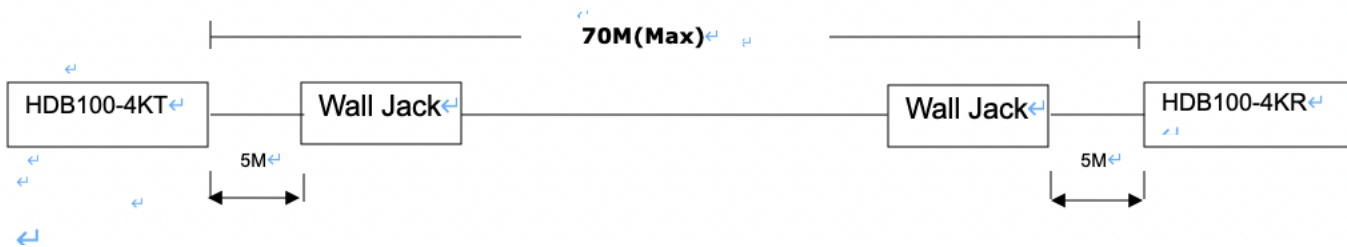
### **Cable:**

Link cable recommend use high quality Cat.5e 、 Cat.6 、 Cat.6a 、 Cat.7 UTP / STP or FTP cable. Poor quality cable or network connection or improper construction will cause unstable connection, video or sound disruptions, picture noise appears.

## Distance chart by different cable:

Cable Type	Range	Supported Video
CAT5e / CAT6	60M	1080p 60Hz 12bit
CAT6a / CAT7	70M	
CAT5e / CAT6	35M	1080p 60Hz 16bit Up to 4096x2160@30Hz 4:4:4(9Gbps) 4K@ 60Hz 4:2:0
CAT6a / CAT7	40M	

If connection through the wall socket, the cable length must less 5 meters between HDMI extender and wall jack, as below drawing:



## Specification:

ITEM NO.	HDB100-4KT	HDB100-4KR
HDMI Interface	HDMI Type A	
VGA Interface	VGA 15-Pin D-Sub	
HDMI Video Support	Up to 1080p@60Hz,48bits,3D Up to 4096 x 2160@30Hz, 4K@60Hz 4:2:0	
VGA Video Support	Up to 1920 x 1200@60Hz@24bits	
Audio Support	Up to LPCM 7.1 192Khz · Dolby TrueHD · DTS-HD MA	
Analog Stereo Interface	3.5mm terminal x 1	
HDBaseT Connector	RJ45 x 1	
HDBaseT Distance	70M (Max)	
IR Input /Output	3.5mm Phone Jack x 2	
IR Carrier Frequency/Angle/Distance	30~60KHz / T : ± 10° / R : ± 55° / 5M / Bi-directional	
RS-232 Interface	DB9(F)/3.5mm STEREO PHONE JACK	DB9(M)/3.5mm STEREO PHONE JACK
RS-232 Data Rate	115200 bps / Duplex	
Power Supply	DC 24 / 1.25A	
Power Consumption	Max: 11.4W,Power Saving Mode: 1.8W	
Temperature	Operation: 0 to 55°C, Storage: -20 to 85°C, Humidity: up to 95%	
Dimension mm	86 x 93.5 x 42.8	92 x 69.5 x 25
Weight g	300	185